



Industrie- und Handelskammer
Nürnberg für Mittelfranken

eMobility in the Nuremberg Metropolitan Region

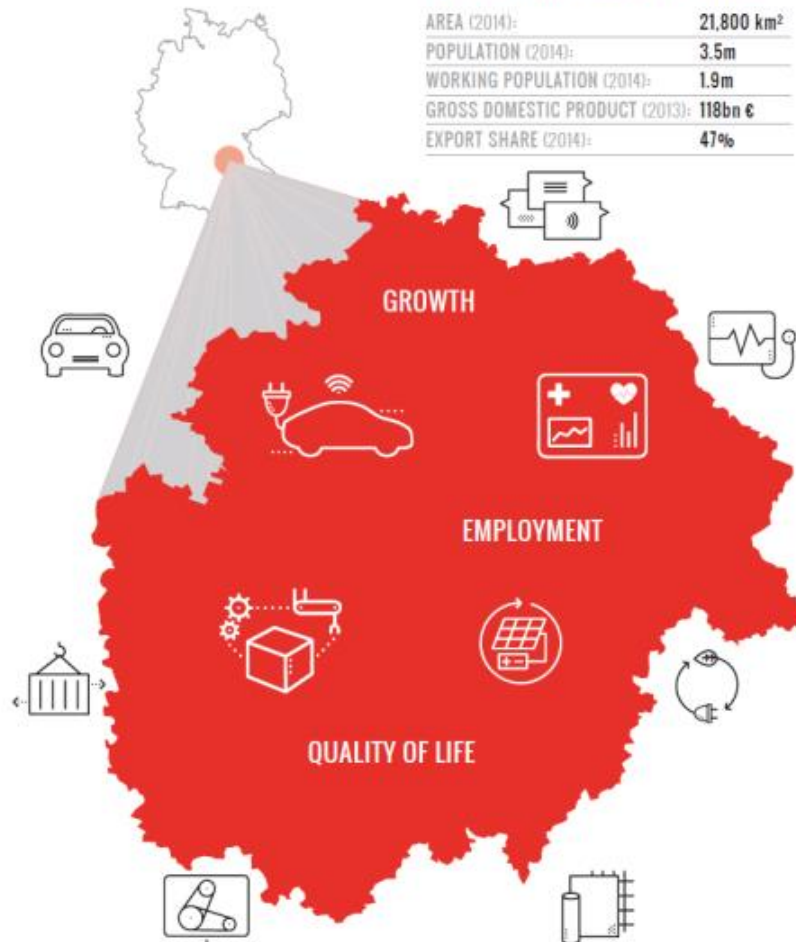
Christian Seitz (Dipl.-Pol. Univ.)
URBAN MOBILITY – Interregional Cooperation
e-Monday | eMove 360° | eCartec
19.10.2016, Munich

Nuremberg Metropolitan Region

TITEL KAPITEL

THE METROPOLITAN REGION OF NUREMBERG

AREA (2014):	21,800 km ²
POPULATION (2014):	3.5m
WORKING POPULATION (2014):	1.9m
GROSS DOMESTIC PRODUCT (2013):	118bn €
EXPORT SHARE (2014):	47%



MATERIALS

- Technical textiles in seat or protective hose production
- Plastic processing

MODULAR DOOR SYSTEMS

- Customised production
- Merging of several functions (window lifter, lock) into one product

DRIVE TECHNOLOGY

- First series production of hybrid modules

ONBOARD ELECTRICAL SYSTEMS

- High degree of expertise in assistance systems

STORAGE TECHNOLOGY

- Global market leader in roller bearing technology

ELECTROMOBILITY

- Know-how in electric drives and power electronics

Nuremberg Metropolitan Region – a supplier region

- Schaeffler AG (e.g. gears)
- Continental AG (e.g. hybrid systems)
- LEONI AG (e.g. cables)
- Brose Fahrzeugteile GmbH & Co
- Siemens inside eCar Unit (e.g. e-Drives)
- Semikron international GmbH (Power electronics)
- Rehau AG + Co (Polymer Solutions)
- ABL (e.g. Wallboxes)
- Fraunhofer IIS (e.g. E-Wheel Drive)
- Fraunhofer IISB (Testcenter)
- Fraunhofer ISC (R&D on Batteries)
- E-Drive Center Bavaria
- Ladeverbund Franken+ (100 Charging Points)

• 6th International Electric Drives Production Conference and Exhibition 2016, Nov. 30th – Dec. 1st 2016, Nuremberg

EMPLOYEES IN THE AREA
"AUTOMOTIVE"

↗ 10.0 % (2008 – 2014)



TREND IN EMPLOYEES SUBJECT TO SOCIAL INSURANCE (2008-2014)

METROPOLITAN REGION:	-10.0 %
BAVARIA:	-7.1 %
GERMANY:	-5.3 %

PERCENTAGE OF ALL EMPLOYEES SUBJECT TO SOCIAL INSURANCE IN THE REGION (2014):	6.3 %
---	-------

Smart specialisation - smart mobility

SMART MOBILITY

CHALLENGES Transport infrastructures are the basis of modern societies and their business activities. The systemic understanding of mobility which covers both passenger and goods transportation locally and long-distance is gaining importance. The electrification of drive trains and the digital interaction of vehicles with one another and/or the infrastructure are shaping the development of vehicle technology. Car-sharing models and the emerging possibilities of automated driving are currently giving rise to new forms of mobility, and this will also see fundamental changes in drive systems. Demographic change will similarly alter mobility requirements.

MISSION As a Metropolitan Region, we stand for connected, intermodal mobility. We offer smart logistics concepts which redefine CO2 efficiency through the latest drive technology!

CO-OPERATIVE PROJECTS (examples):

- Automated driving
- Environmentally friendly logistics
- Age-based mobility
- Smart networks
- Hybrid drive systems



Nuremberg Metropolitan Region



Nuremberg Metropolitan Region @Netherlands

Dutch Automated Vehicle Initiative investigating the human interaction with automation from highway to urban conditions
Riender Happee (TU Delft)

IHK-Innovations- und AnwenderClub eMobilität

Metropolregion Nürnberg | Nordbayern

"Autonomes Fahren
Fahrerassistenz
Energieeffizientes Fahren"

19. November 2015 | 13:00 Uhr bei der Intedis GmbH & Co. KG in Würzburg



Market chances and cooperation opportunities in the Netherlands at the Schaeffler AG (29.09.2015).



Dutch Mission to Bavaria (14.-16.04.2016)



— Schaeffler AG (Bildquelle: Generalkonsulat des Königreichs der Niederlande in München)

Next Activity:
Delegation visit in Nuremberg (7th-9th Dec. 2016)



— Firmenbesuch bei Continental (Bildquelle: Generalkonsulat des Königreichs der Niederlande in München)

Nuremberg Metropolitan Region

EMOBILITY | GREEN&SMART MOBILITY

eMobility

Elektromobilität | Green&Smart Mobility



Industrie- und Handelskammer
Nürnberg für Mittelfranken



eMobility

Die IHK Nürnberg für Mittelfranken führt eine längerfristig angelegte Studie zum Thema „Energieeffiziente Mobilität“ durch, um die aktuelle und künftige wirtschaftliche Bedeutung dieses Zukunftsthemas für die Europäischen Metropolregion Nürnberg (EMN) abschätzen zu können. Die Studie konzentriert sich auf technologische Aspekte wie Elektromobilität, Elektrifizierung des Antriebsstrangs, Leichtbauweise, Verbrauchsoptimierung durch Elektronik sowie Informations- und Kommunikationstechnik.

Suchen

LETZTE BEITRÄGE

- ZSW: Lithium-Ionen-Zellen aus Ulm mit Spitzenwerten**
- E-Auto-Index: Deutschland wird drittichtigstes Herstellerland**
- TheMobilityHouse: Keine Alternative zur E-Mobilität**
- Jetzt als Testfahrer für das**

More: www.ihk-nuernberg.de/blogs/emobility



Industrie- und Handelskammer
Nürnberg für Mittelfranken

Thank you for your attention!

Christian Seitz (Dipl.-Pol. Univ.)

Industrie- und Handelskammer Nürnberg für Mittelfranken

Geschäftsbereich Innovation | Umwelt

Tel.: 0911 1335- 213

E-Mail: eMobility@nuernberg.ihk.de

www.ihk-nuernberg.de | www.ihk-nuernberg.de/blogs/emobility |

Xing: xing.to/mobilitaet